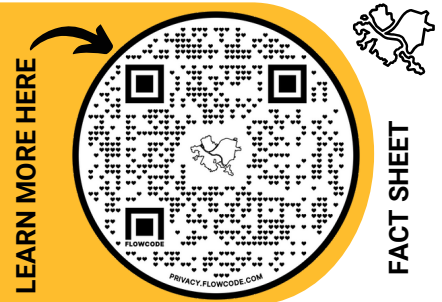


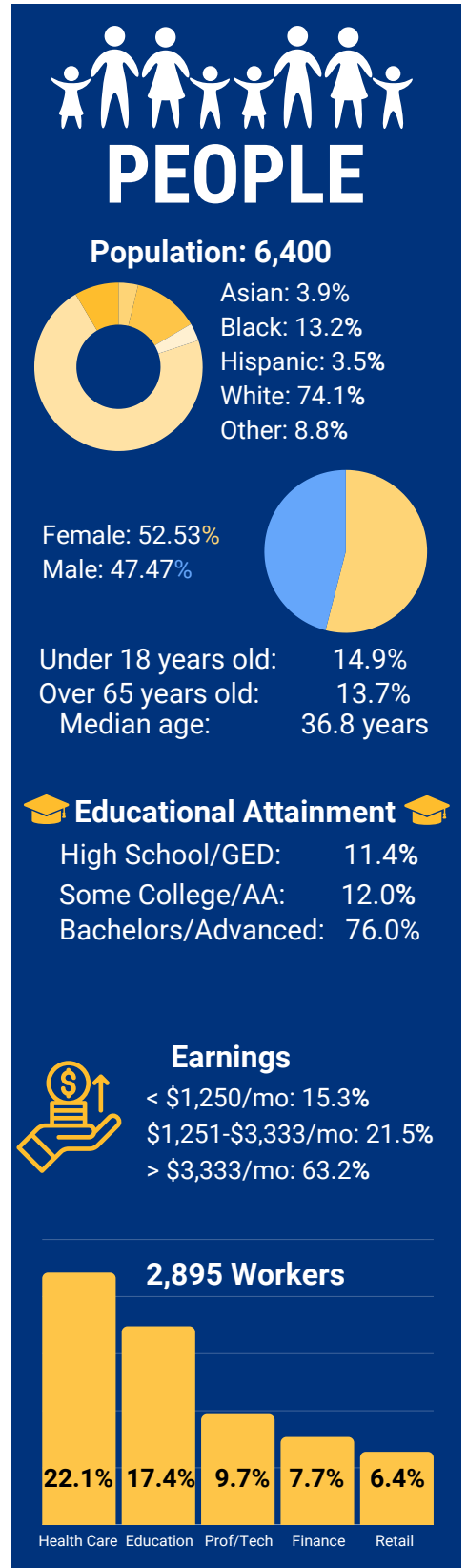
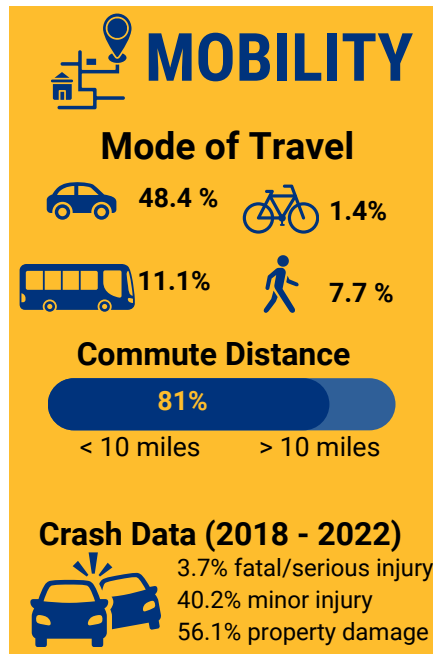
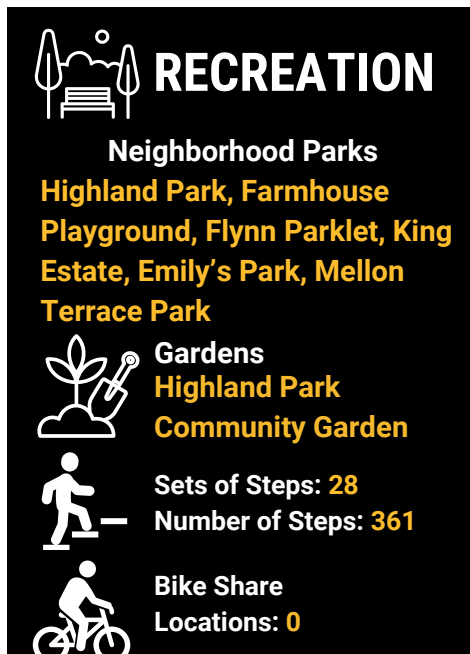
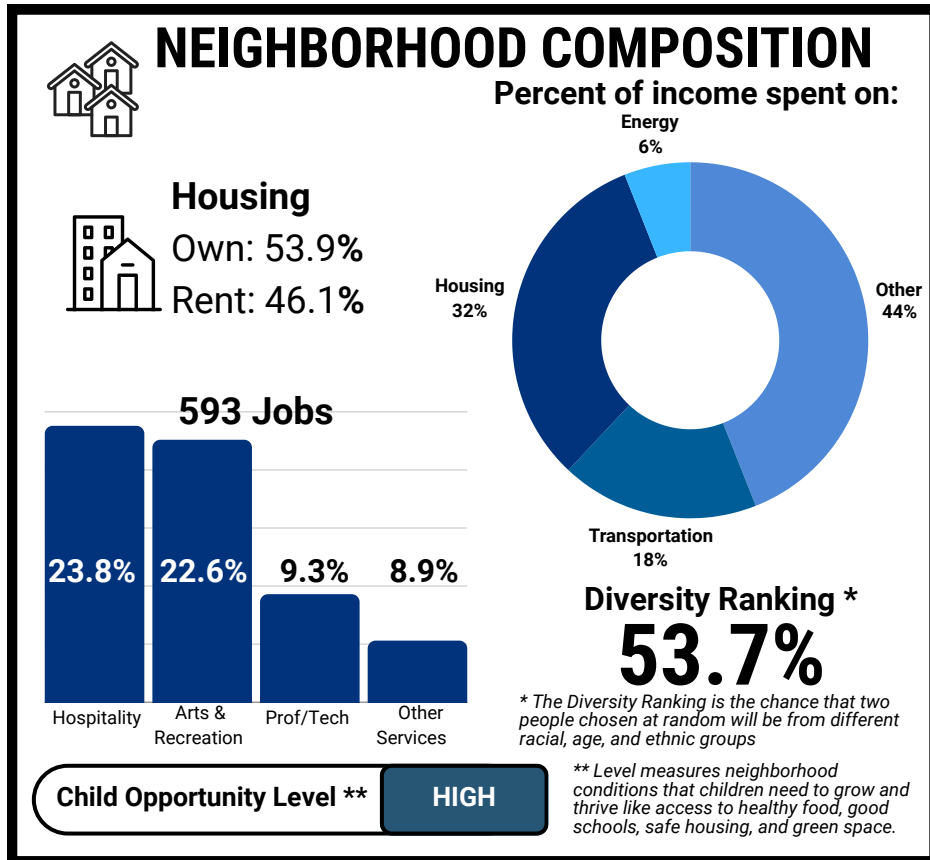


HIGHLAND PARK

Region: East Council District 7
 City Councilperson: Deb Gross
 Neighborhood Planner: Shoshana Davidson



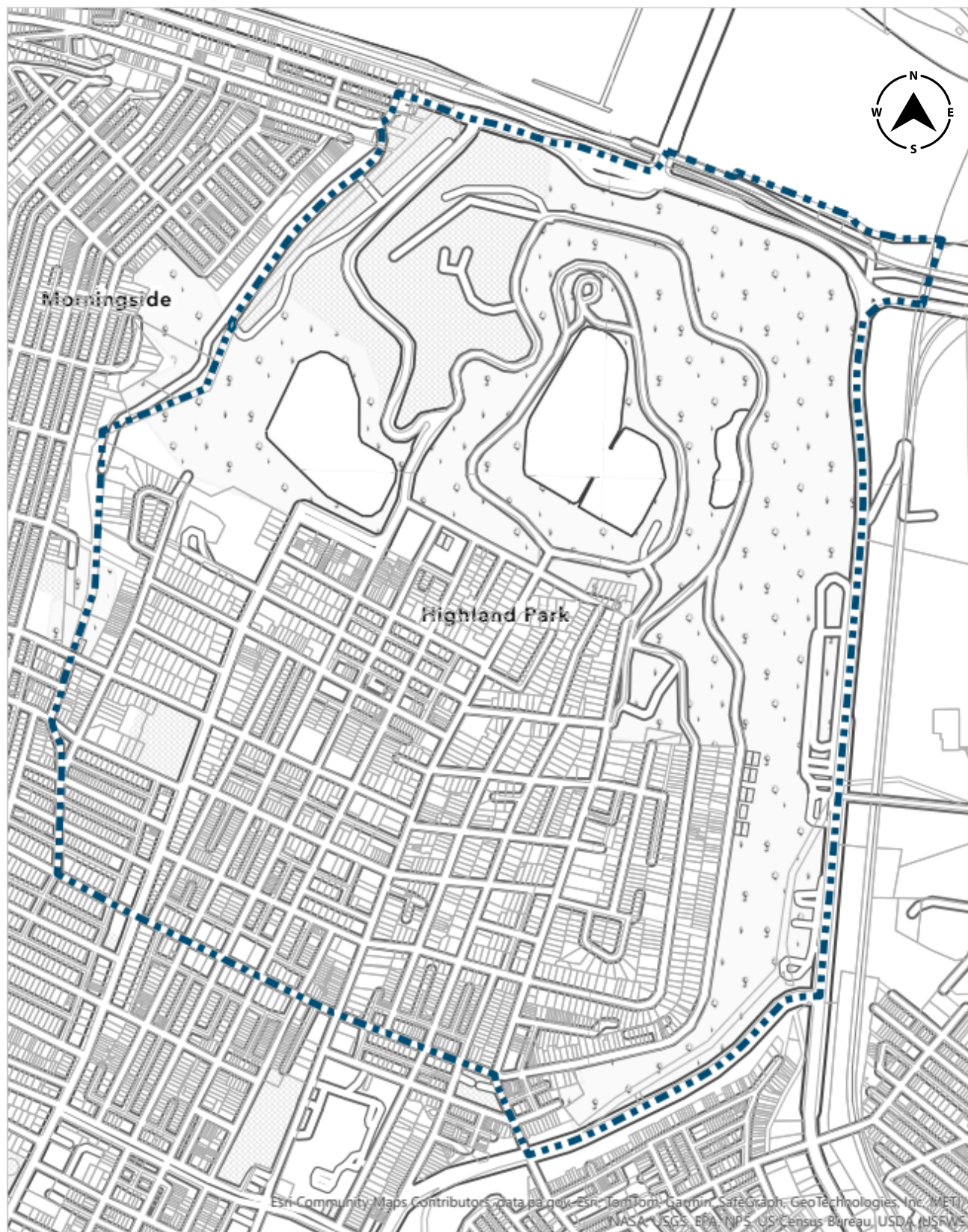
Fun Fact: For over a century, water has anchored Highland Park. The 377 acre park is centered by Reservoir One - the main service water for Pittsburgh's Water and Sewer Authority. Today, the Highland Park loop is popular for running, driving, biking, walking and more.





COLORING MAP

HIGHLAND PARK



Esri, Community Maps Contributors, data.ea.gov, Esri, TomTom, Garmin, SafeGraph, GeoTechnologies, Inc., METI, NASA, USGS, EPA, NPS, US Census Bureau, USDA, iUSFWS